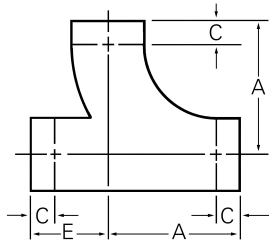


Copper-Nickel Butt Welding Fittings

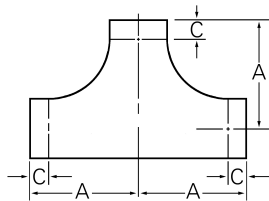
Long Turn Tees, Single Sweep - NAVSEA 810-1385880, Revision D



- UNS Designation Numbers: 90-10 (UNS C70600) and 70-30 (UNS C71500).
- Nominal Chemicals 90-10: Copper 88.6%, Nickel 10.0%, Iron 1.4%.
- Nominal Chemicals 70-30: Copper 69.5%, Nickel 30.0%, Iron 0.5%.

Nominal Pipe Size	OD	A	E	C (Min)	Nominal Wall	Weight	90-10 Part Number	70-30 Part Number
1 1/4	1.660	2 7/16	2	9/16	.072	.6	511386	
1 1/2	1.900	2 15/16	2 1/4	11/16	.072	.9	481206	470035
2	2.375	3 23/32	2 5/8	23/32	.083	1	262482	462422
2 1/2	2.875	4 5/8	3 1/8	7/8	.083	2	129838	462430
3	3.500	5 13/32	3 13/32	29/32	.095	3	129854	433245
3 1/2	4.000	6 1/4	3 7/16	15/16	.095	4	481222	481230
4	4.500	6 31/32	3 31/32	31/32	.109	6	129896	462448
5	5.563	8 19/32	5 3/32	1 3/32	.125	12	129870	472710
6	6.625	10 11/64	6 11/64	1 11/64	.134	19	129919	472702
8	8.625	13 3/8	8 7/8	1 3/8	.148	36	129935	481272
10	10.750	16 9/16	10 3/4	1 9/16	.187	75		582060

Long Turn Tees, Double Sweep - NAVSEA 810-1385880, Revision D



Nominal Pipe Size	OD	A	C (Min)	Nominal Wall	Weight	90-10 Part Number	70-30 Part Number
1	1.315	2	1/2	.065	.9	481298	470051
1 1/4	1.660	2 7/16	9/16	.072	1	511394	
1 1/2	1.900	2 15/16	11/16	.072	1.5	481311	461662
2	2.375	3 23/32	23/32	.083	3	261575	462383
2 1/2	2.875	4 5/8	7/8	.083	5	286119	462391
3	3.500	5 13/32	29/32	.095	3	132598	462406
3 1/2	4.000	6 1/4	15/16	.095	5		
4	4.500	6 31/32	31/32	.109	7.5	132572	462414
5	5.563	8 19/32	1 3/32	.125	14	129951	481353
6	6.625	10 11/64	1 11/64	.134	24	129977	481379
8	8.625	13 3/8	1 3/8	.148	46	231017	481395

Sizes not shown may be available upon request.
Available in "regular" thickness (similar to Schedule 40s).