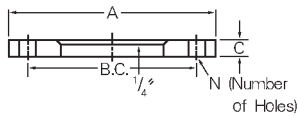
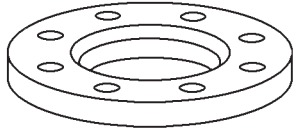


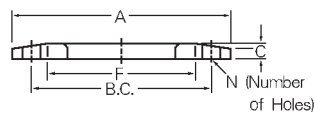
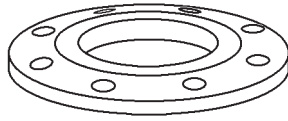
Stainless Steel Flanges

Stainless Steel Backing Flanges

SK-35



SK-39



■ SK-35 & SK-39 flanges are medium-weight stainless steel backing flanges for use with butt welding or slip-on type stub ends when a stainless steel backing flange is desired. Available in ACI grade CF-CM (316-L) and CF-8 (304).

Size	# of Holes	OD A	Hole Size	Bolt Circle	SK-35 C	SK-35 Part Number	SK-35-SO Part Number	SK-39 C	SK-39 Part Number	SK-39-SO Part Number
1 1/2	4	5	5/8	3 7/8				7/8	241795	
2	4	6	3/4	4 3/4	5/8	123492		1	241973	263276
2 1/2	4	7	3/4	5 1/2	5/8	499233		1 1/8		500505
3	4	7 1/2	3/4	6	3/4	123434		1 3/16	241965	241981
4	8	9	3/4	7 1/2	3/4	123395	421044	1 5/16	241949	241999
5	8	10	7/8	8 1/2				1 7/16	499623	
6	8	11	7/8	9 1/2	7/8	123379	413279	1 9/16	241850	242000
6	8	11	7/8	9 1/2	7/8			1 9/16		
8	8	13 1/2	7/8	11 3/4	7/8	123353		1 3/4	241834	242018
10	12	16	1	14 1/4	1	123337	411950	1 15/16	241818	242026
12	12	19	1	17	1	123002	409042	2 3/16	241787	242034
14	12	21	1 1/8	18 3/4	1	123476	241753	3 1/8	241753	242042
16	16	23 1/2	1 1/8	21 1/4	1	123044	408787	3 7/16	241745	242050
18	16	25	1 1/4	22 3/4	1 1/8	123060	409050	3 13/16	241737	242068
20	20	27 1/2	1 1/4	25	1 1/8	123086	409068	4 1/16	241711	242076
22							493504			
24	20	32	1 3/8	29 1/2	1 1/8	123109	412045	4 3/8	241703	242084
28							412087			
30	28	38 3/4	1 3/8	36	1 1/4	462668	412061			454330
32										454348
36	32	46	1 5/8	42 3/4	1 1/4		412079			451544
42	36	53	1 5/8	49 1/2	1 3/8					595631
48	44	59 1/2	1 5/8	56	1 3/8					

Dimensions are in inches. All weights are approximate. Sizes not shown may be available upon request.