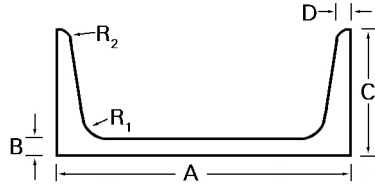


Aluminum Channel

6061-T6 American Standard Channel



- Specifications: ASTM B 221
- Stocked in 25 foot lengths

| Size (A) | Web (B) | Flange (C) | Thickness (D) | Radius (R ₁) | Radius (R ₂) | Lbs Ft | Lbs/Length | Part Number |
|----------|---------|------------|---------------|--------------------------|--------------------------|--------|------------|-------------|
| 3 | .170 | 1.410 | .170 | .270 | .100 | 1.417 | 35.425 | 136908 |
| 3 | .258 | 1.500 | .170 | .270 | .100 | 1.729 | 43.225 | 136916 |
| 3 | .356 | 1.600 | .170 | .270 | .100 | 2.074 | 51.850 | 466816 |
| 4 | .180 | 1.580 | .180 | .280 | .110 | 1.846 | 46.150 | 136924 |
| 4 | .247 | 1.650 | .180 | .280 | .110 | 2.161 | 54.025 | 136932 |
| 4 | .320 | 1.720 | .180 | .280 | .110 | 2.504 | 62.600 | 466824 |
| 5 | .190 | 1.750 | .190 | .290 | .110 | 2.316 | 57.900 | 435946 |
| 5 | .325 | 1.885 | .190 | .290 | .110 | 3.108 | 77.700 | 681385 |
| 5 | .472 | 2.030 | .190 | .290 | .110 | 3.975 | 99.375 | 421222 |
| 6 | .225 | 1.950 | .200 | .300 | .120 | 3.002 | 75.050 | 136958 |
| 6 | .314 | 2.030 | .190 | .300 | .120 | 3.631 | 90.775 | 136966 |
| 6 | .438 | 2.160 | .200 | .300 | .120 | 4.498 | 112.450 | 584931 |
| 7 | .230 | 2.110 | .210 | .310 | .130 | 3.541 | 88.525 | 575398 |
| 7 | .314 | 2.190 | .210 | .310 | .130 | 4.232 | 105.800 | 545246 |
| 7 | .419 | 2.299 | .210 | .310 | .130 | 5.097 | 127.425 | 776067 |
| 8 | .250 | 2.290 | .220 | .320 | .130 | 4.252 | 106.300 | 286892 |
| 8 | .303 | 2.340 | .220 | .320 | .130 | 4.751 | 118.775 | 584949 |
| 8 | .487 | 2.530 | .220 | .320 | .130 | 6.484 | 162.100 | 510966 |
| 10 | .240 | 2.600 | .240 | .340 | .140 | 5.278 | 131.950 | 545220 |
| 12 | .300 | 2.960 | .280 | .380 | .170 | 7.415 | 185.375 | 502719 |
| 12 | .387 | 3.050 | .280 | .380 | .170 | 8.639 | 215.980 | 503862 |
| 12 | .510 | 3.170 | .280 | .380 | .170 | 10.374 | 259.350 | 498342 |
| 12 | .632 | 3.292 | .280 | .380 | .170 | 12.101 | 236.978 | 727602 |
| 15 | .400 | 3.400 | .400 | .500 | .240 | 11.708 | 292.700 | 653756 |
| 15 | .716 | 3.716 | .400 | .500 | .240 | 17.282 | 432.050 | 662103 |

Dimensions are in inches. All weights are approximate.