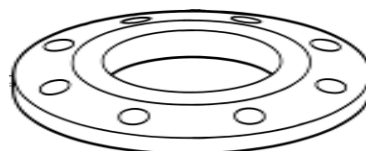
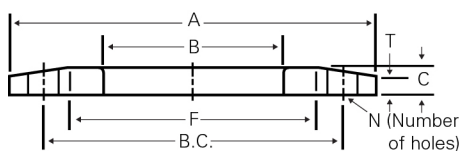


Backing Flanges

SK-39 and SK-39-P Backing Flanges



- An economical, light-weight backing flange for use with face rings and butt welding type stub ends.
- Tapered face on the flange improves visibility during gasket alignment.
- Cast in commercial quality steel or machined from ASTM A 36 plate.
- Cast or drilled hole patterns per ANSI B16.1, Class 125 (identical to ANSI B16.5, Class 150).
- Coated with red oxide primer. Galvanized, epoxy and other coatings are also available.
- Normally used with Alaskan SK-1 and SK-1-P face rings and all Alaskan butt welding stub ends.
- Also available in T304 and T316 Stainless Steel.

SK-39

Made to Fit OD Tube Size Stub Ends

Tube OD	3/4	1	1 1/4	1 1/2	2	2 1/2	3	4	5	6	8	10	12	14	16	18
A (OD)	3 7/8	4 1/4	4 5/8	5	6	7	7 1/2	9	10	11	13 1/2	16	19	21	23 1/2	25
B (ID)	1	1 1/4	1 1/2	1 7/8	2 3/8	2 7/8	3 3/8	4 3/8	5 3/8	6 1/2	8 1/2	10 1/2	12 1/2	14 1/2	16 5/8	18 5/8
C (THK)	3/8	3/8	3/8	1/2	5/8	5/8	5/8	5/8	3/4	3/4	3/4	7/8	7/8	1	1	1 1/8
B.C.	2 3/4	3 1/8	3 1/2	3 7/8	4 3/4	5 1/2	6	7 1/2	8 1/2	9 1/2	11 3/4	14 1/4	17	18 3/4	21 1/4	22 3/4
Hole Size	5/8	5/8	5/8	5/8	3/4	3/4	3/4	3/4	7/8	7/8	7/8	1	1	1 1/8	1 1/8	1 1/4
N	4	4	4	4	4	4	4	8	8	8	8	12	12	12	16	16
F	1 3/4	2 1/4	2 5/8	3	3 5/8	4 5/8	5	6 3/16	7 3/8	8 1/2	10 5/8	12 3/4	15	16 1/4	18 1/2	21
T	1/4	1/4	1/4	3/8	3/8	3/8	3/8	3/8	3/8	3/8	3/8	1/2	1/2	1/2	1/2	5/8
Weights	0.8	1.0	1.2	2.0	3.0	4.7	5.0	7.0	9.5	10.0	14.0	21.5	30.0	34.0	44.0	52.0

Tube OD	20	24	30	32	36
A (OD)	27 1/2	32	38 3/4	41 3/4	46
B (ID)	20 5/8	24 5/8	30 5/8	32 5/8	36 5/8
C (THK)	1 1/8	1 1/8	1 1/4	1 1/4	1 1/4
B.C.	25	29 1/2	36	38 1/2	42 3/4
Hole Size	1 1/4	1 3/8	1 3/8	1 5/8	1 5/8
N	20	20	28	28	32
F	23	27 5/8	33 3/4	35 3/4	40 1/4
T	5/8	5/8	3/4	3/4	3/4
Weights	61.0	91.0	130	170	190

SK-39-P

Made to Fit Nominal Pipe Size Stub Ends (Identical to SK-39 Except for B Dimensions)

Nominal Pipe Size	1/2	3/4	1	1 1/4	1 1/2	2	2 1/2	3	4	5	6	8	10	12	14 thru 24 see SK-39
Pipe OD	.840	1.05	1.31	1.66	1.90	2 3/8	2 7/8	3 1/2	4 1/2	5 9/16	6 5/8	8 5/8	10 3/4	12 3/4	
B (ID)	1 1/16	1 1/4	1 9/16	1 15/16	2 1/8	2 5/8	3 1/8	3 3/4	4 3/4	5 7/8	7	9	11 1/8	13 1/8	
Weights	0.7	0.9	0.9	1.0	1.7	2.8	4.2	4.5	6.7	7.5	9.5	12.5	19.0	28.0	

Dimensions are in inches. All weights are in pounds based on a metal density of .2836 lb/in³
When ordering galvanized flanges, specify SK-39G or SK-39-PG.